



Ampereship



ELECTRIC-SOLAR-CAR FERRY

Worlds first full-electric car ferry (inland waters)

- > Emission free, Noiseless, Economical
- > Fully optimized energy system
- > Maximum efficiency by optimized electronic control
- > Hull shape: streamlined, minimal resistance, minimum mass
- > Ship hull: maximum robustness, minimum maintenance costs
- > Individually engineered for each area of operation (motorization, dimensions, etc.)
- > Highest safety
- > All BinSchUO (Germany) approval zones possible.



Made in Germany!



Ampereship GmbH

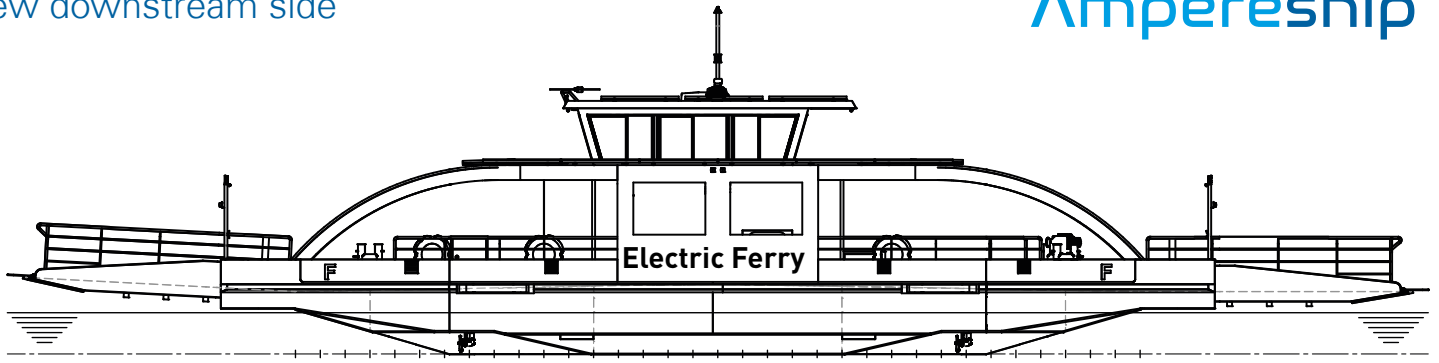
Ampereship is an innovation driven, technologically advanced company with huge experiences in building Solar/Electric Passenger ships and Ferries.

Our Solar powered ships can be driven totally by electrical power due to efficient, hydrodynamic design. Our ships are designed in a way that uses less energy than other (semi) solar-powered ships and therefore a diesel engine is obsolete. This makes Ampereship: your economic and environmentally friendly partner in shipbuilding.

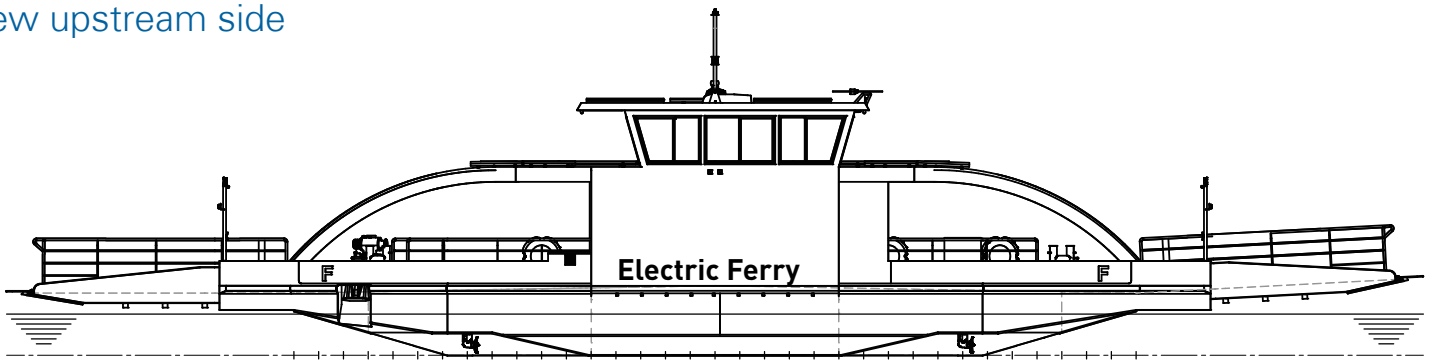


Ampereship

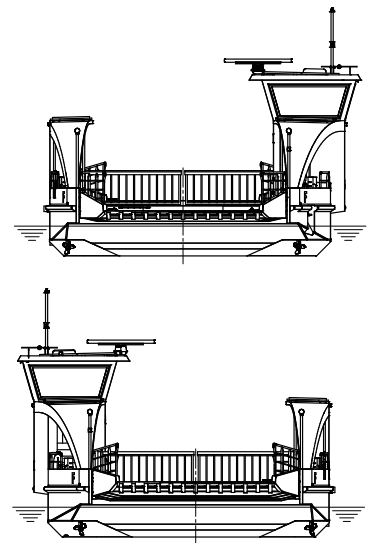
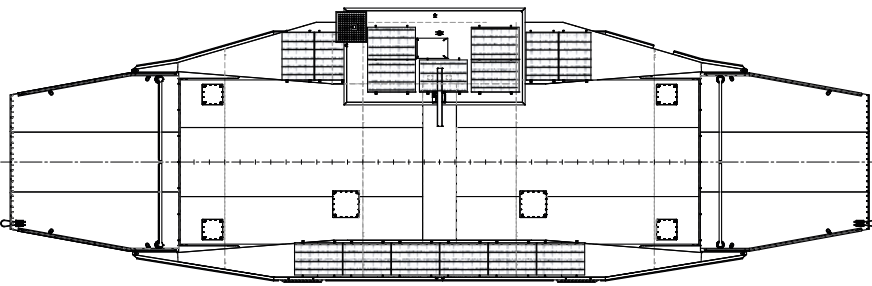
View downstream side



View upstream side



View main deck & solar modules



Main features

Length overall:	28,00 m
Width overall:	8,90 m
Draught:	0,83 m
Moulded depth:	1, 25 m/1,40 m
Hight above waterline:	5,77 m
Service speed:	7 km/h
Maximum speed:	13 km/h

Ships capacities

Capacity:	25 t
Persons:	45
Vehicles:	6 cars
Heaviest single car	12 t
Max. axle load	8 t
Solar modules:	15
Overall capacity:	5,4 kWp

Propulsion

Rudder propellers:	4 x 20 kW
Batteries:	Lithium-Polymer
Battery capacity:	252 kWh
Official approval:	BinSchUO Zone 4 (Germ.)

Motorization and dimensions variable according to customer requirements up to 4 x 75 kW possible. Drive propeller electrically rotatable 360°. All Bin-SchUO (Germany) approval zones possible.