

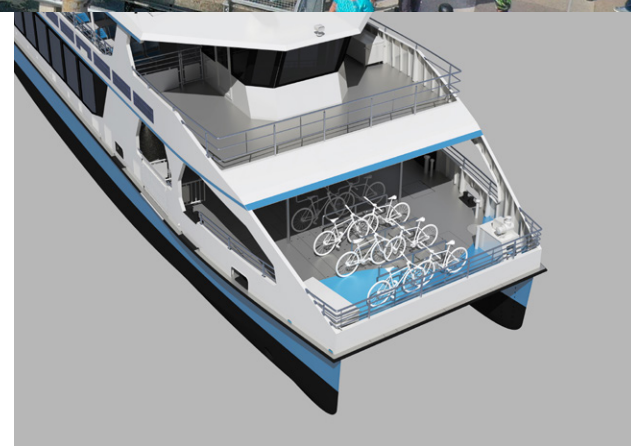


Ampereship



# ELECTRIC-SOLAR-PASSENGER SHIP/FERRY ASP-300

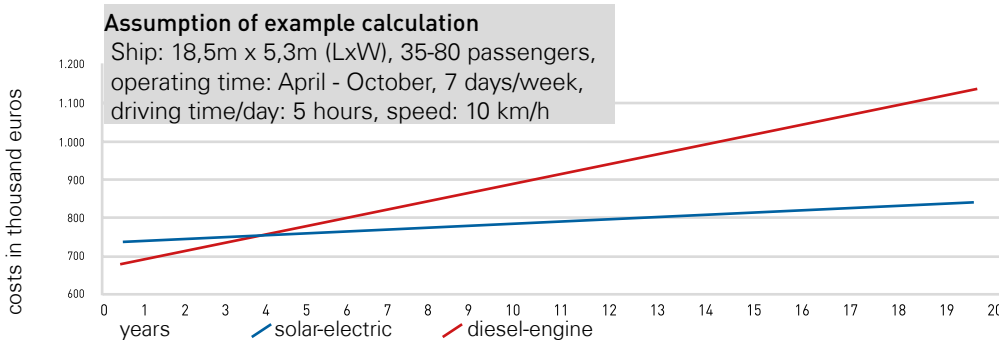
- > Our ferrydesigns put customers first
- > Emission free, Noiseless, Economical
- > Highly customizable
- > Fully optimized energy system
- > Maximum efficiency by optimized electronic control
- > Hull shape: streamlined, minimal resistance, minimum mass
- > Ship hull: maximum robustness, minimum maintenance costs
- > Individually engineered for each area of operation
- > High safety, redundant systems
- > ES-TRIN and class approval possible



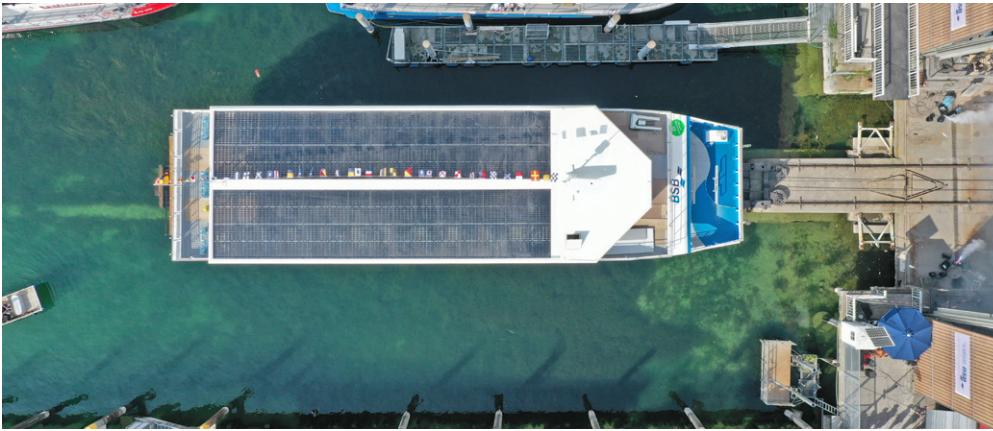
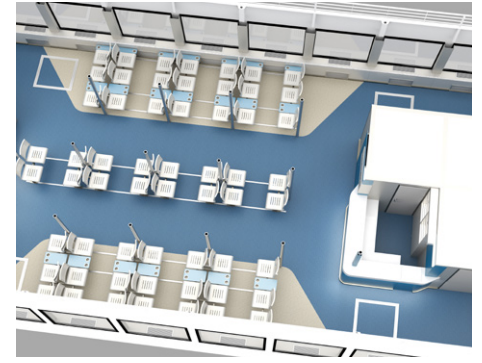
**Ampereship** is specialized in the manufacturing of emission-free electric solar-powered ships and ferries of the highest quality for commercial shipping. We help you to bring your operating costs to a minimum. A ship that meets the zeitgeist and maximizes your profits. We let you participate in the construction of the ship in each phase and are always at your side.

  
Made in Germany!

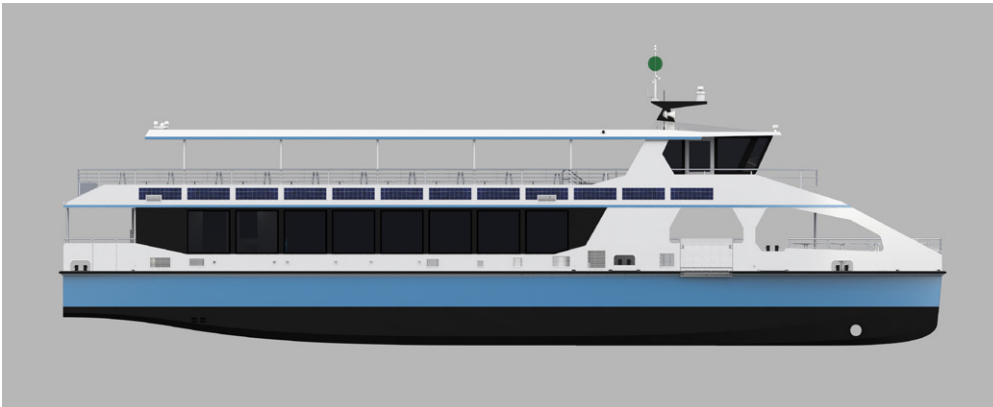
## comparison of costs



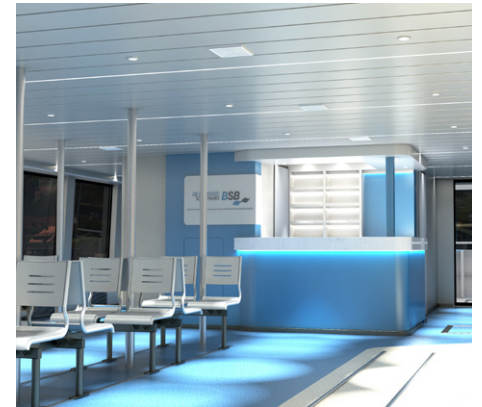
## modern interior



## side view



## completely customizable



### Main features

Length overall:	30,30 m
Width overall:	8,42 m
Draught:	ca. 1,26 m
Least moulded depth:	2,50 m
Service speed:	15 km/h
Maximum speed:	17 km/h

### Features

250 seats
wheelchair redy
Handicap gangway
Individual interior options
Remote maintenance

### Propulsion

Rudder propellers:	2 x 75 kW
Batteries:	Lithium-Polymer
Bow thruster:	2 x 35 kW
Battery capacity:	960 kWh
Solar modules:	22,00 kWp
Total area:	134 sqm
Module type:	bifacial

Motorization and dimensions variable according to customer requirements up to 2 x 75kW possible.  
 Drive propeller electrically rotatable 360°.